

Human LILRB1/CD85j/ILT2 Protein

Cat. No. LIL-HM2B1

Description

| | |
|-------------------------|---|
| Source | Recombinant Human LILRB1/CD85j/ILT2 Protein is expressed from HEK293 with hFc tag at the C-Terminus. It contains Gly24-Arg457. |
| Accession | Q8NHL6-1 |
| Molecular Weight | The protein has a predicted MW of 73.8 kDa. Due to glycosylation, the protein migrates to 78-105 kDa based on Tris-Bis PAGE result. |
| Endotoxin | Less than 1EU per µg by the LAL method. |
| Purity | > 95% as determined by Tris-Bis PAGE > 95% as determined by HPLC |

Formulation and Storage

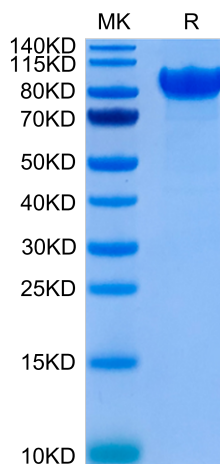
| | |
|-----------------------|---|
| Formulation | Lyophilized from 0.22µm filtered solution in PBS (pH 7.4). Normally 8% trehalose is added as protectant before lyophilization. |
| Reconstitution | Centrifuge the tube before opening. Reconstituting to a concentration more than 100 µg/ml is recommended. Dissolve the lyophilized protein in distilled water. |
| Storage | -20 to -80°C for 12 months as supplied from date of receipt. -20 to -80°C for 3-6 months in unopened state after reconstitution. 2-8°C for 2-7 days after reconstitution. Recommend to aliquot the protein into smaller quantities for optimal storage. Please minimize freeze-thaw cycles. |

Background

LILRB1, also known as CD85j and ILT2, is a 110 kDa transmembrane glycoprotein in the LILR immunoregulatory protein family. Mature human LILRB1 consists of a 438 amino acid (aa) extracellular domain (ECD) with 4 tandem Ig-like domains, a 21 aa transmembrane segment, and a 168 aa cytoplasmic domain with 4 inhibitory ITIM motifs. LILRB1 is a receptor for class I MHC antigens. Recognizes a broad spectrum of HLA-A, HLA-B, HLA-C, HLA-G and HLA-F alleles. Receptor for H301/UL18, a human cytomegalovirus class I MHC homolog. Ligand binding results in inhibitory signals and down-regulation of the immune response.

Assay Data

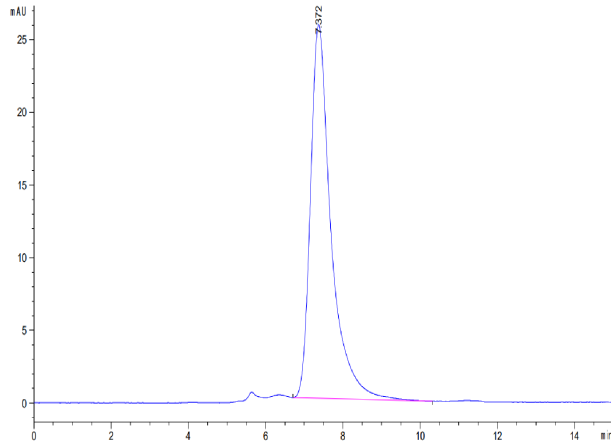
Tris-Bis PAGE



Human LILRB1 on Tris-Bis PAGE under reduced conditions. The purity is greater than 95%.

SEC-HPLC

Assay Data



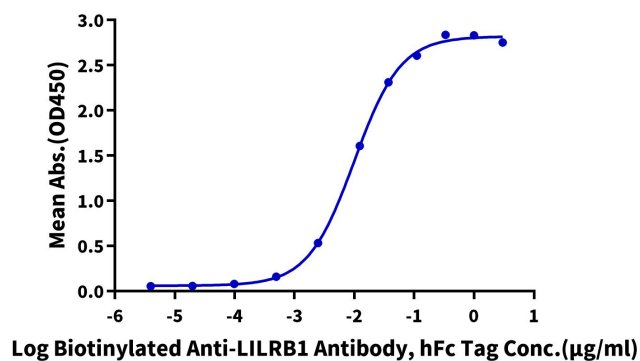
The purity of Human LILRB1 is greater than 95% as determined by SEC-HPLC.

Assay Data

ELISA Data

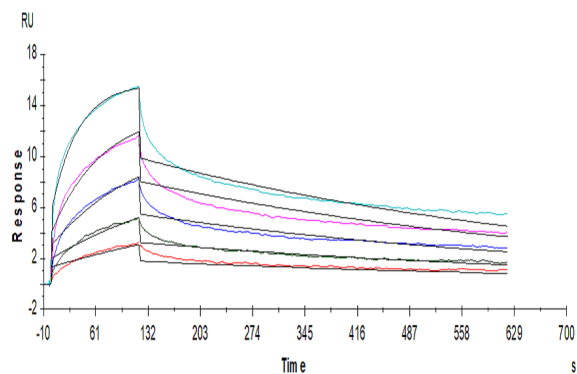
Human LILRB1, hFc Tag ELISA

0.1µg Human LILRB1, hFc Tag Per Well



Immobilized Human LILRB1, hFc Tag at 1µg/ml (100µl/Well) on the plate. Dose response curve for Biotinylated Anti-LILRB1 Antibody, hFc Tag with the EC50 of 10.0ng/ml determined by ELISA.

SPR Data



Human LILRB1, hFc Tag captured on Protein A Chip can bind Human HLA-G Tetramer, His Tag with an affinity constant of 1.49nM as determined in SPR assay (Biacore T200).